



Shirodkar

Preci Comp



**World Class
Precision Machining**



Strengths

- Equipped with latest modern Japanese machines and inspection facilities
- Dedicated, experienced and skilled team of experts to facilitate the precision we deliver with consistency
- Experienced in-house support in designing the process, tooling, inspection and rust-preventive packaging that guarantees the parts we make are safe and ready-to-use when they reach the customer
- Implemented process control by the use of SPC (Statistical Process Control)
- Ability to supply a wide range of products in all kind of materials
- Working with Multi Nationals as well as with SMEs
- Experienced in exports to worldwide destinations
- Ability to supply wide range of components from casting, forging and bar stocks
- Full assembly and testing facilities
- High quality and certified supply base for castings, forgings and bar stock material

Machines

- Vertical Machining Centers - Makino, LMW
- CNC Turning Centers - Okuma, LMW
- CNC Vertical Turret Lathes - Daewoo Doosan, Hyundai Kia
- CNC Turn Mill Centers - Okuma
- HMC - Okuma

Materials

(as per European and American Standards)

- Steel Alloys
- Aluminum Alloys
- Bronze
- SG Iron / Cast Iron
- Engineering Plastics
- High Nickel Alloys
- Titanium Alloys
- Super Duplex Stainless Steels

Capabilities

Turning

- Diameter: 800 mm
- Length: 800 mm
- Max Weight: 300 kg
- Max Swingover: 890 mm
- Accuracy: Below 10 microns

Milling

- Max Size: 1000 mm x 400 mm x 500 mm
- Max Weight: 300 kg
- Accuracy: Below 20 microns

Additional Processes and Coatings

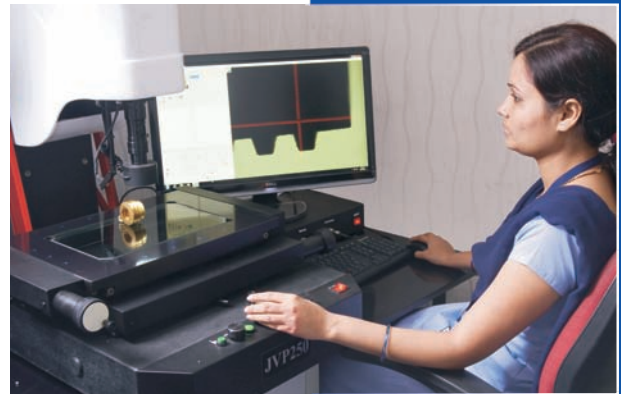
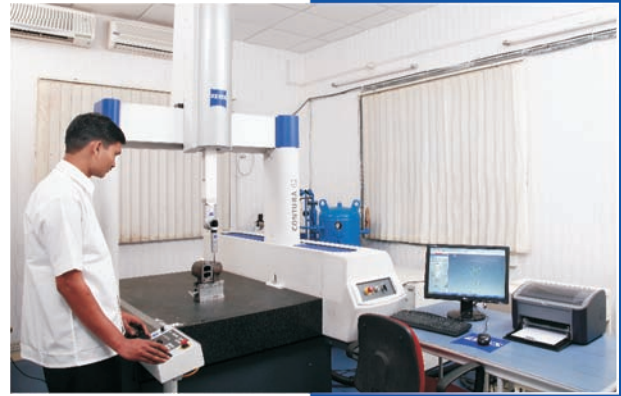
- TIG welding
- Boring
- Reaming
- Thread Milling
- Broaching
- Grinding
- Honing
- Lapping
- Polishing
- Coatings:
- Nitriding
- Anodizing
- Plating
- Painting
- Phosphating
- Copper Plating
- Glass bead peening
- Polymer coating

Inspection

- 3D - Carl Zeiss Coordinate Measuring Machine
- 2D - Trimos Height Measuring Equipment
- Profile Projector - Contour Graph Analyzer
- Hawkeye Endoscope to check defects in deep & narrow passages

Quality Testing

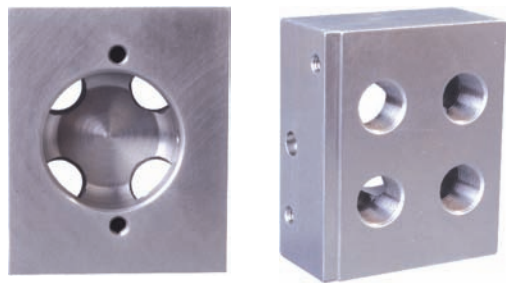
- Hydro pressure testing up to 700 bars
- Mechanical & chemical properties of materials from NABL accredited laboratories
- Mitutoyo surface roughness testing machine
- Hardness testing machine



Product Range



Cross Head
Material: SG Iron



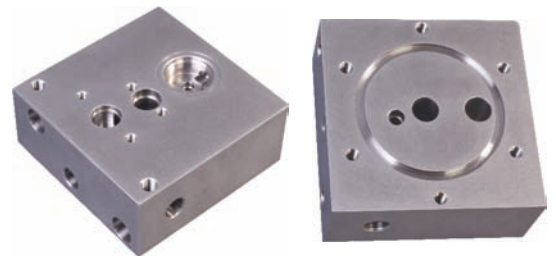
Manifold
Material: SS 316



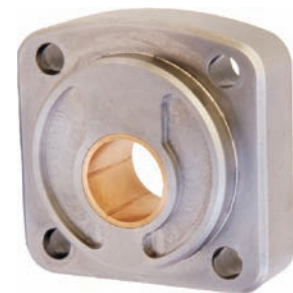
Feed Through Plug
Material: Inconel 718



Stator Holder
Material: SS 316L



Manifold
Material: SS 316



Crankcase Oil Pump Retainer
Material: Cast Iron BS 250



Cap Nut
Material: SS 316L



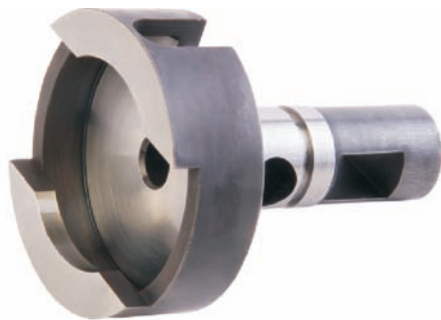
Shirodkar
Preci Comp



Cylinder Head
Material: SA 516 Gr. 70



Cooler Shell Connection
Material: Cast Iron EN-1561



Baffle Holder
Material: EN-19



Seal Cup
Material: EN-43B



Piston for Gas Compressor
Material: EN-1561



Hydraulic Adaptor
Material: LG2 Bronze



Heat Exchanger Header Block
Material: SA 516 Gr. 70



Heat Exchanger Assembly



Class Room Training for Operators

About us

- Shirodkar preci comp, an ISO 9001 certified company by TUV Nord, is engaged in manufacturing of precision machined parts and assemblies using latest technology high end CNC machines
- Established in 2005
- Deliver quality products in shorter lead times meeting small to medium batch size requirements of customers conforming to international standards
- Parts manufactured under controlled production process & checked with ultra modern inspection equipments to ensure that customer can use them Direct On Line
- A systematic manufacturing process supported by documentation such as process flow diagram, ERP system, control plan, ballooned drawings, inspection test reports...etc. to ensure 100% customer satisfaction
- Offer to customer: Top quality products and services at attractive price

Our Product Sectors

- Hydraulics & Pneumatics
- Oil & Gas Exploration Machinery
- Valves
- Compressors
- Injection Molding Machinery
- Glass molding machinery
- Transmission & Suspension
- Process Automation for Food & Beverages
- General Engineering

Among our customers are

- Atlas Copco
- Alfa Laval
- Bonfiglioli
- Taco Hendrickson
- Parker Hannifin
- ASB International
- Halliburton
- Gevasol
- Gawa Equipment Connections
- Burkhardt Compression Technique



Participation at International Fairs


Achievements

- Sales Grown by 6 times in last 2 years
- Exports Contribute more than 45% in total sales
- Received Prestigious Award “Best Supplier” in New Product Development Category from Atlas Copco in October 2011
- Manufacturing capacity doubled by adding 5 new machines in 2011



Atlas Copco rewarded best supplier

Experienced in Exporting to Worldwide Destinations:

	The Netherlands		Singapore
	France		Malaysia
	Ireland		China
	Sweden		New Zealand
	Germany		USA

Location



SHIRODKAR PRECI COMP Pvt. Ltd.

(A Sanjay Group Company)

Address: BG - 71/1/11, General Block, MIDC Bhosari
Off Telco Road, Indrayani Corner
Bhosari, Pune – 411 026, INDIA

Phone: +91 20 4660 1001/4/5/6/11

Fax: +91 20 3068 5638

Email: info@spcindia.com

Skype: mshirodkar

Web: www.spcindia.com